



**23 Macleay Drive Padbury WA**

3 1 1

PRICE GUIDE: From High \$700,000's

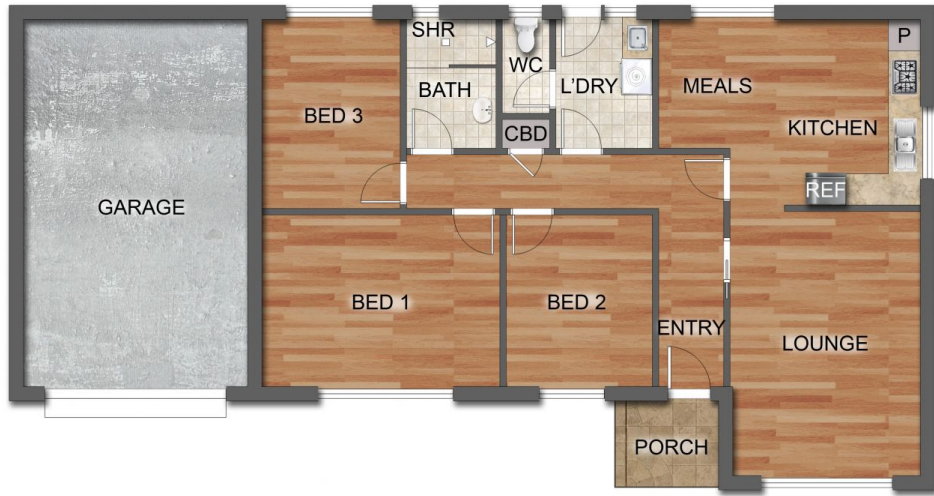
If you are on the search for a single storey family home with large garden space in Padbury then look no further! An opportunity to pick up a much loved home is here! Padbury is in such high demand at the moment and for good reason, it is still affordable, infrastructure is being improved constantly all around you and it is minutes away from our stunning coastline, walking distance to Westfield Whitfords and an abundance of medical care facilities!

23 Macleay is a beautifully large property with large lawned areas, front and rear terraced established gardens and you very own zen space with firepit. It features 3 great sized bedrooms, 1 bathroom, large single garage that is double deep and this on top of the open plan family living and kitchen central hub of this great family home.

**Land Size** : 692 sqm  
**View** : <https://www.prestigepropertyperth.com.au/sale/wa/northern-suburbs/padbury/residential/house/8003705>



**Glenn Williams**  
**08 6225 5151**



### FLOOR PLAN

This floor plan including furniture, fixture measurements and dimensions are approximate and for illustrative purposes only. BoxBrownie.com gives no guarantee, warranty or representation as to the accuracy and layout. All enquiries must be directed to the agent, vendor or party representing this floor plan.

23 Macleay Drive, Padbury